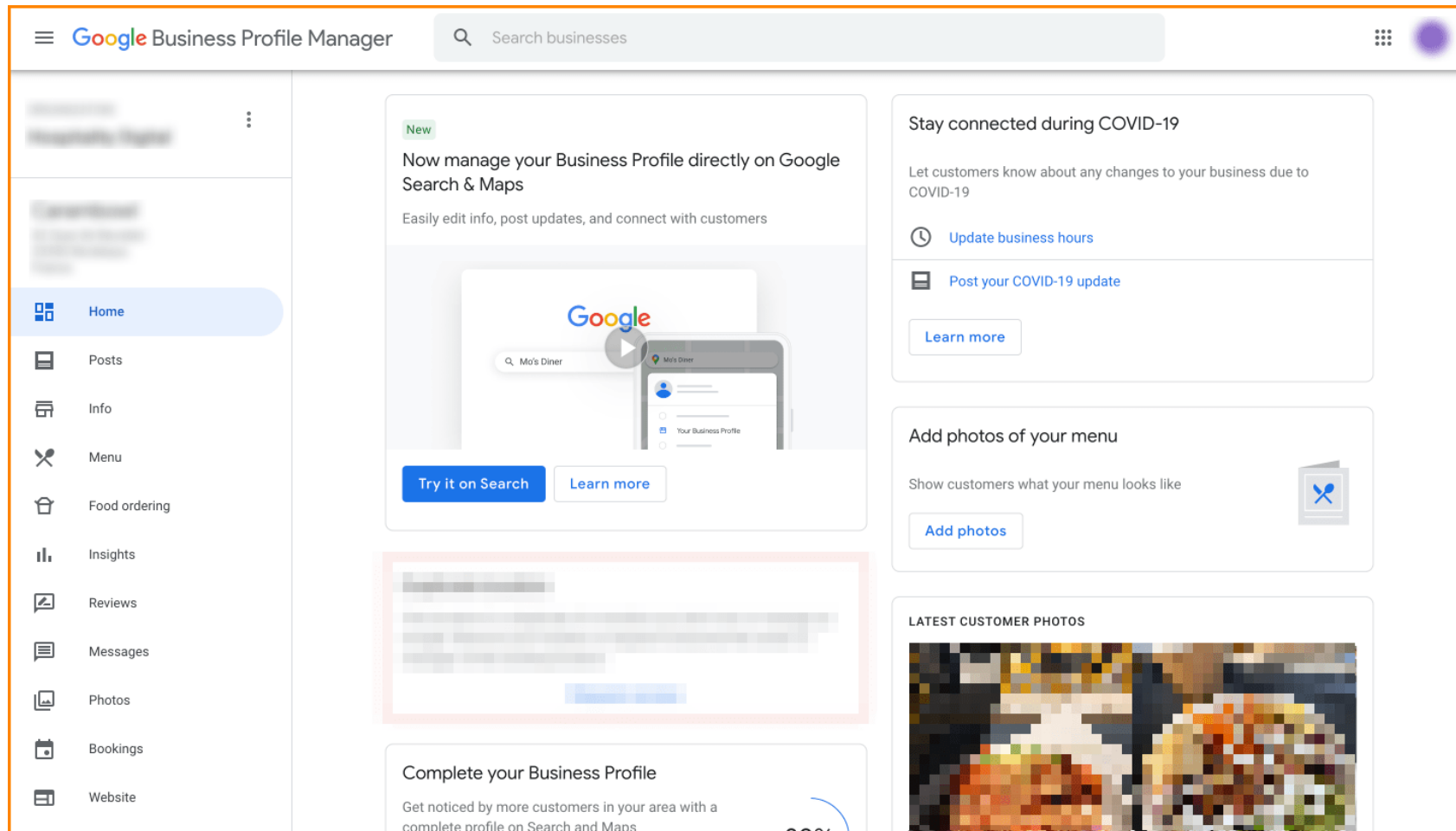
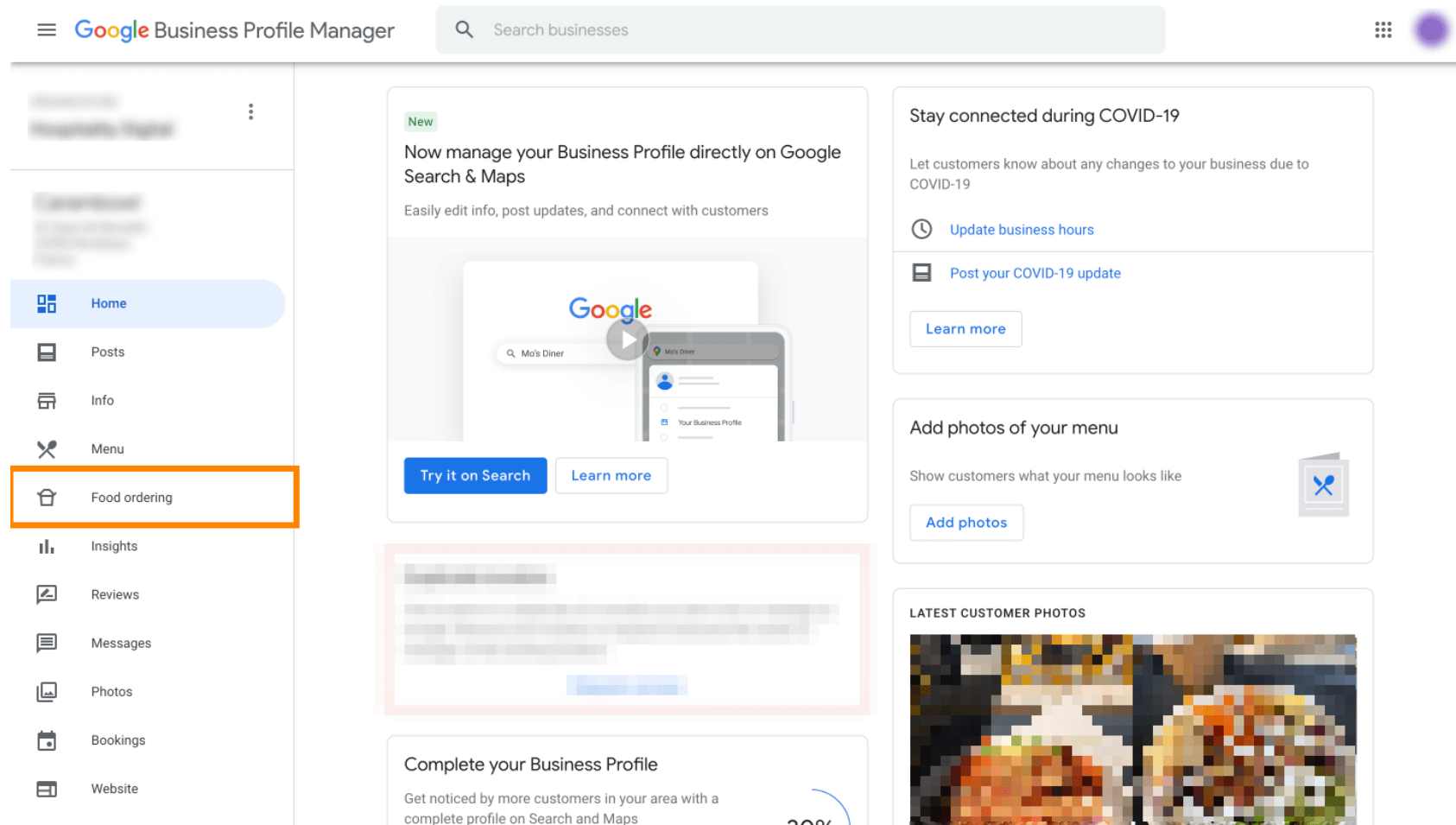


 Il primo passaggio è accedere alla **gestione dei profili aziendali di Google**.

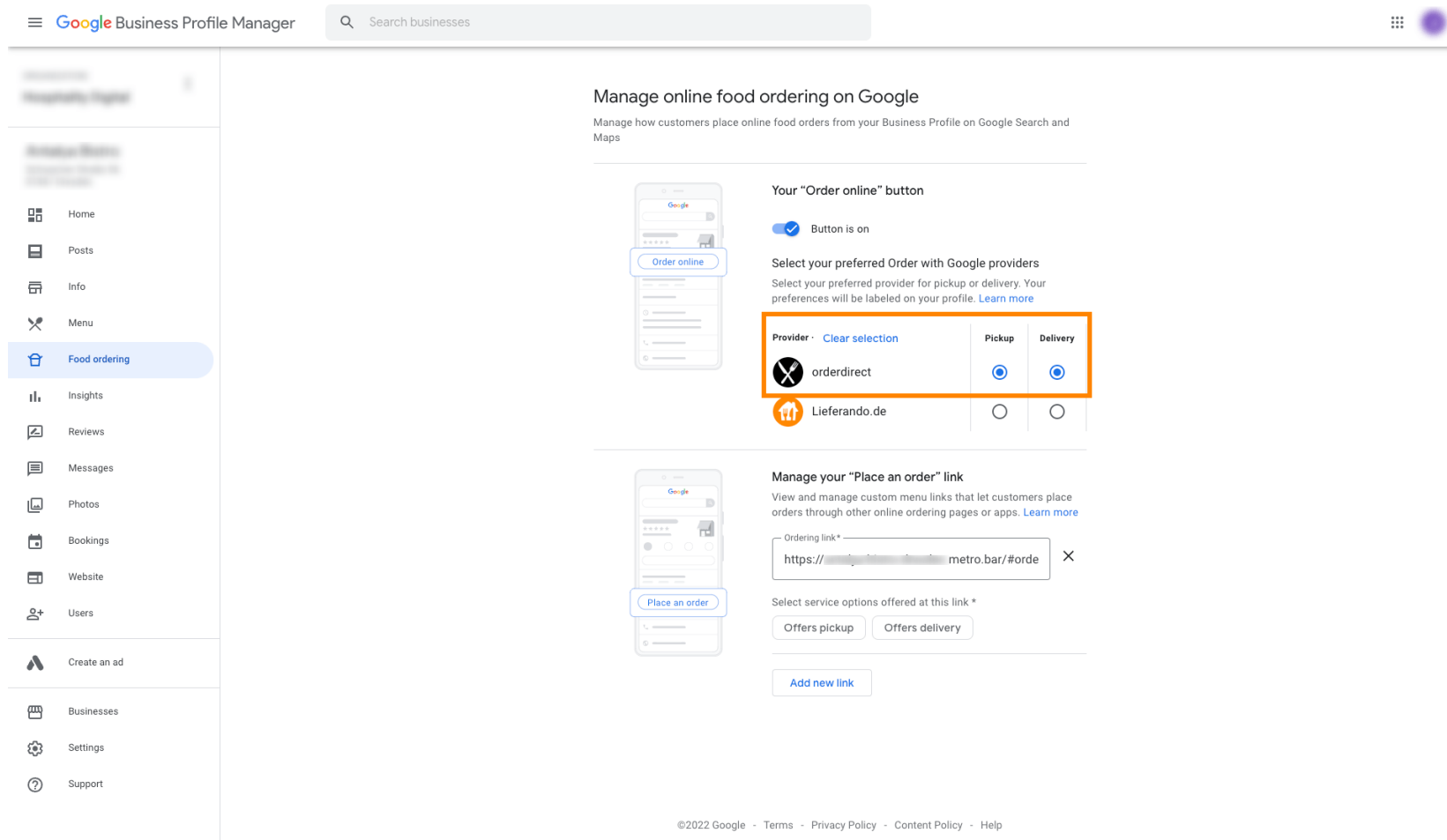


Fare clic su **Ordinazione cibo**.





Qui puoi gestire l'ordinazione di cibo online su Google. Seleziona "orderdirect" per **Ritiro** e **Consegna**.



Google Business Profile Manager | Search businesses



Manage online food ordering on Google

Manage how customers place online food orders from your Business Profile on Google Search and Maps

Your "Order online" button

Button is on

Select your preferred Order with Google providers
Select your preferred provider for pickup or delivery. Your preferences will be labeled on your profile. [Learn more](#)

Provider	Clear selection	Pickup	Delivery
 orderdirect	<input type="checkbox"/>	<input checked="" type="radio"/>	<input checked="" type="radio"/>
 Lieferando.de	<input type="checkbox"/>	<input type="radio"/>	<input type="radio"/>

Manage your "Place an order" link

View and manage custom menu links that let customers place orders through other online ordering pages or apps. [Learn more](#)

Ordering link*
 X

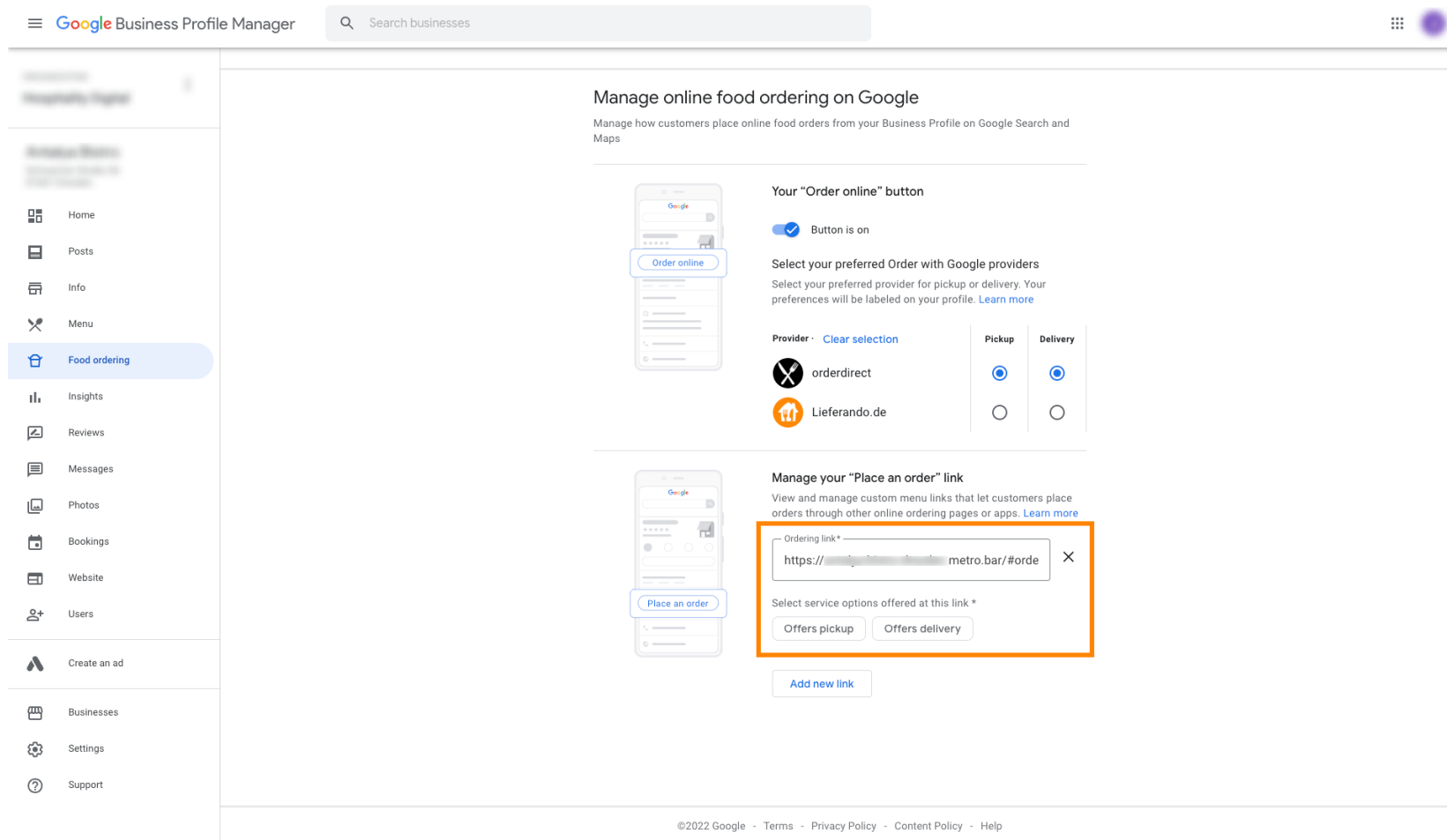
Select service options offered at this link *

Offers pickup Offers delivery

[Add new link](#)

©2022 Google - Terms - Privacy Policy - Content Policy - Help

Sotto **Gestisci il collegamento "Effettua ordine"** puoi aggiungere l' **URL** del tuo negozio online e selezionare le **opzioni di servizio** offerte dal collegamento facendo clic su di esso.



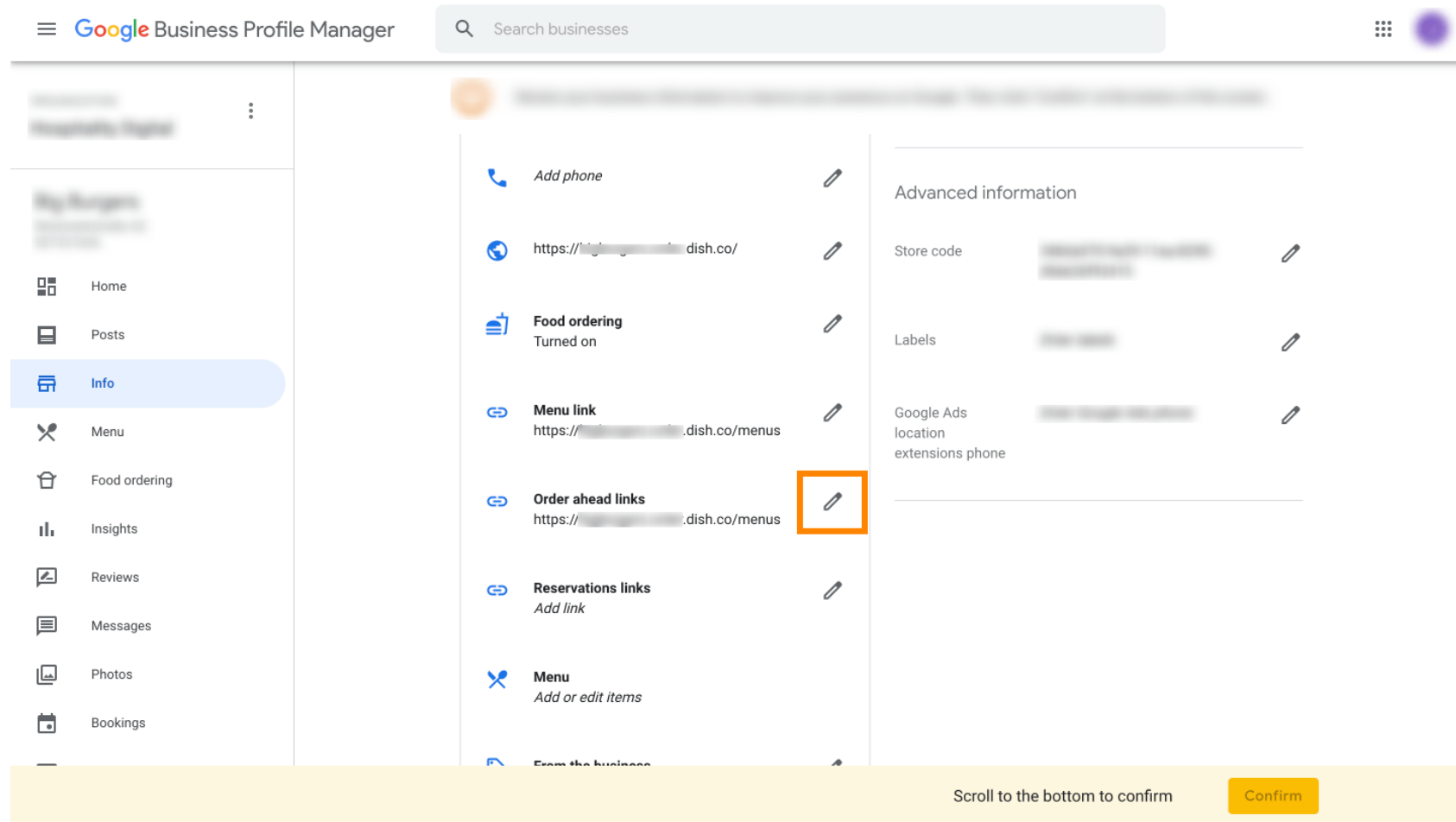
The screenshot shows the Google Business Profile Manager interface. The left sidebar contains navigation options: Home, Posts, Info, Menu, Food ordering (highlighted), Insights, Reviews, Messages, Photos, Bookings, Website, Users, Create an ad, Businesses, Settings, and Support. The main content area is titled "Manage online food ordering on Google" and includes a search bar and a list of settings. The "Your 'Order online' button" section shows the button is on and allows selecting a preferred provider (orderdirect or Lieferando.de) for pickup or delivery. The "Manage your 'Place an order' link" section is highlighted with an orange box and shows a form to add a new link with a URL and service options (Offers pickup, Offers delivery).



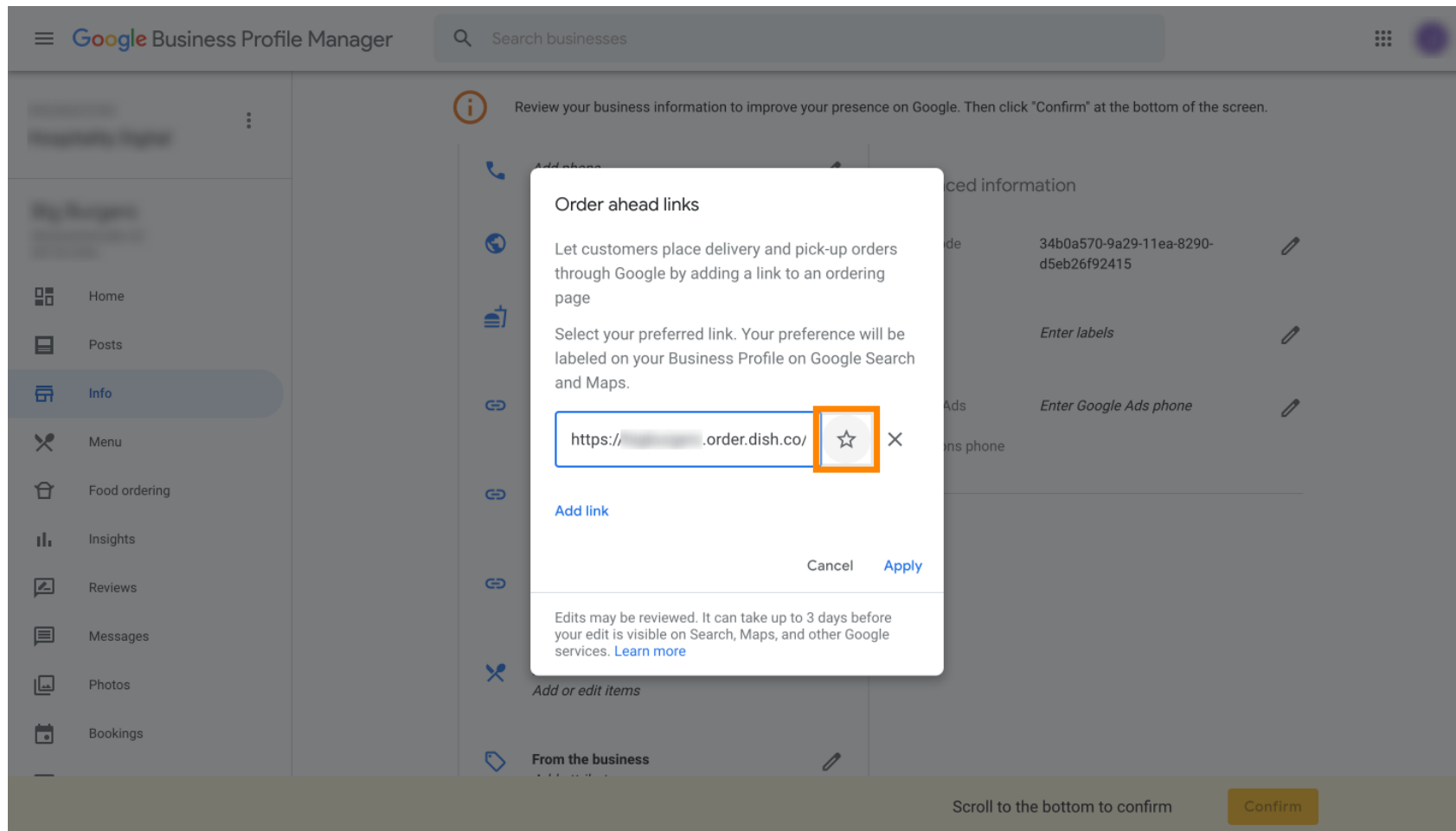
Ora torna a Gestione dei profili dell'attività di Google e assicurati che l'ordinazione di cibo sia **attivata** .

The screenshot shows the Google Business Profile Manager interface. On the left is a navigation menu with options: Home, Posts, Info (highlighted), Menu, Food ordering, Insights, Reviews, Messages, Photos, and Bookings. The main content area displays business details. A section titled 'Food ordering' is highlighted with an orange box, showing 'Turned on' with an edit icon. Other sections include 'Add phone', a website link ending in '.dish.co/', 'Advanced information' (Store code, Labels, Google Ads location extensions phone), 'Menu link', 'Order ahead links', 'Reservations links', and 'Menu'. At the bottom, a yellow banner contains the text 'Scroll to the bottom to confirm' and a 'Confirm' button.

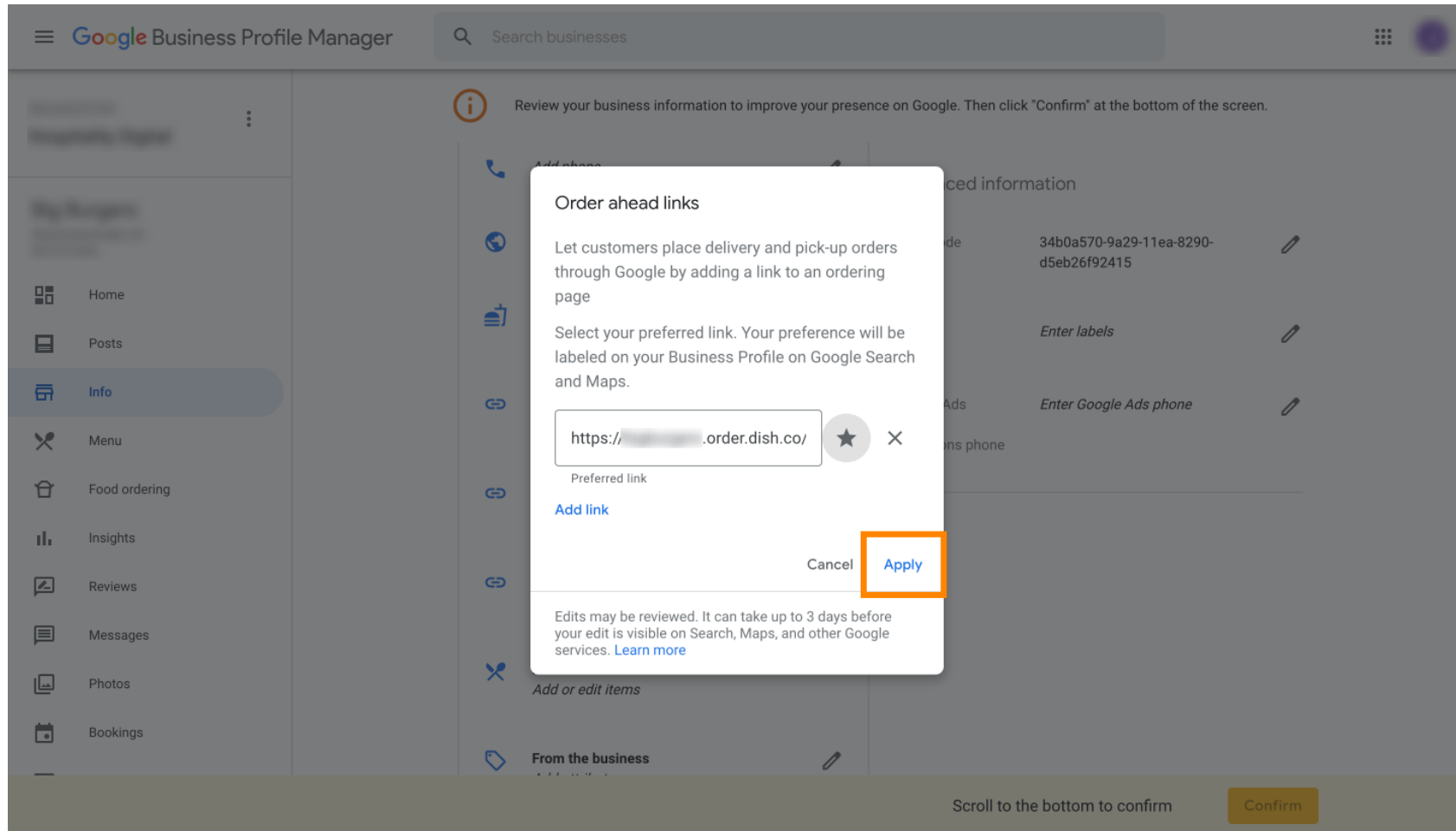
Se hai più partner per ordinare cibo, puoi contrassegnare il tuo partner preferito facendo clic sull'icona della matita.



- Non è necessario fare clic sull'icona a forma di stella per contrassegnare il collegamento preferito come preferito.



Per sicurezza, seleziona **Applica** . Questo è tutto, il gioco è fatto.





Scansiona per andare al lettore interattivo